

Actual air emission and generating data from RRI Energy facilities are compared to data obtained from the U.S. Environmental Protection Agency (EPA) and other publicly available sources for 2007.

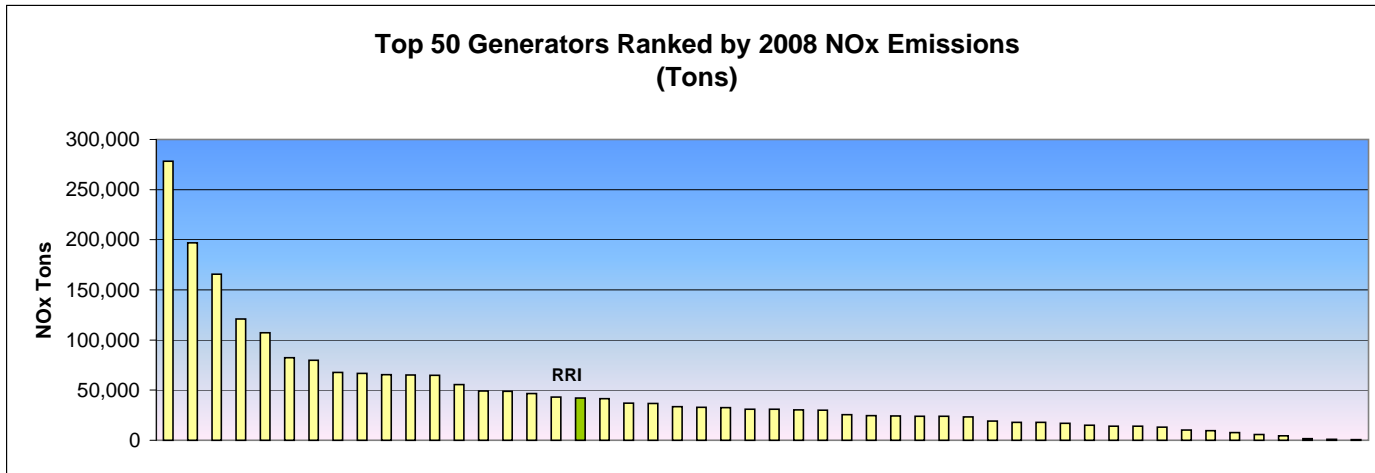
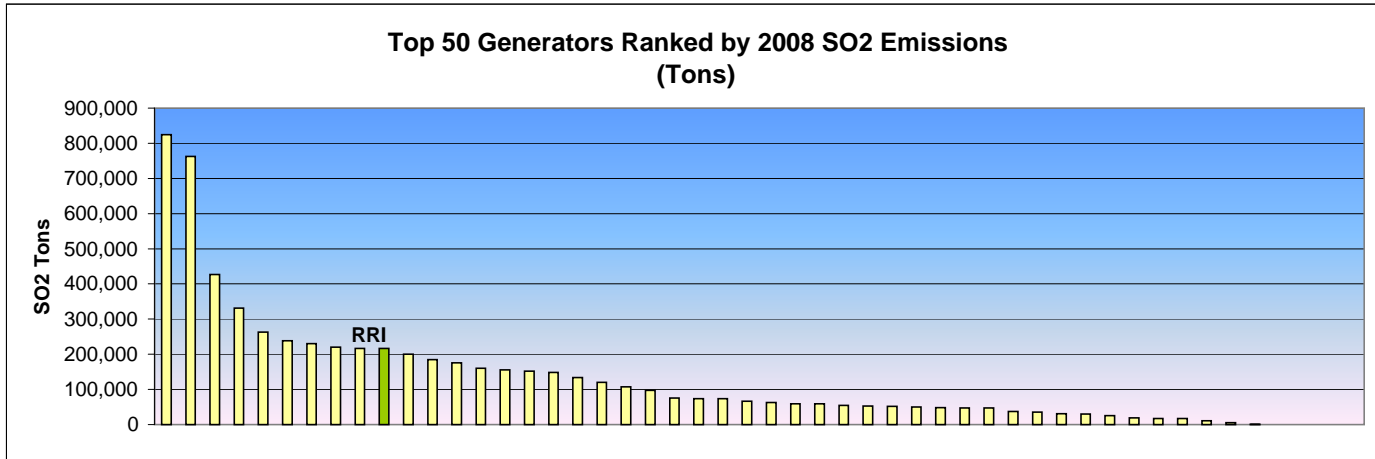
The data from the EPA includes emissions data collected by Continuous Emissions Monitoring Systems (CEMS) at the following electric generating units that are affected by the 1990 Amendments to the Clean Air Act:

All steam electric generating units over 25 megawatts of capacity;

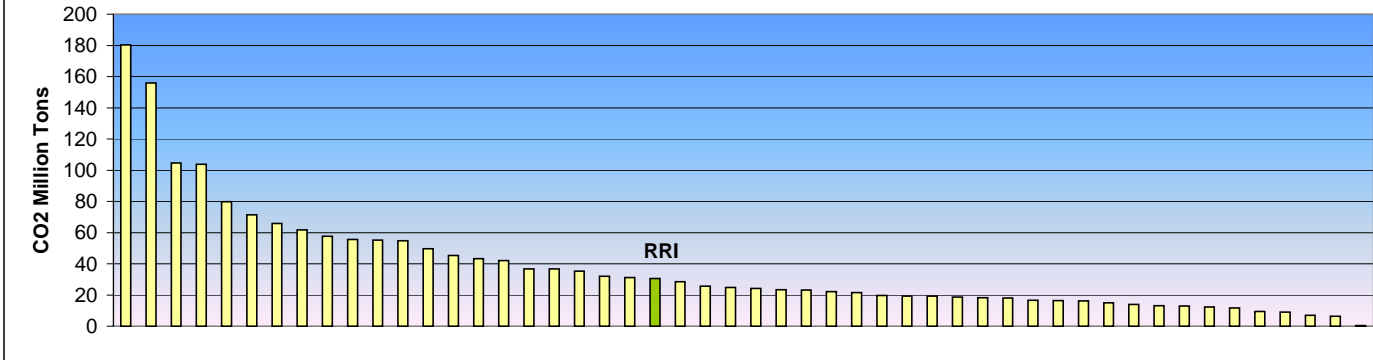
All new generating units; and

All other electric generating units that are required to report air emissions under the Acid Rain CEMS Program.

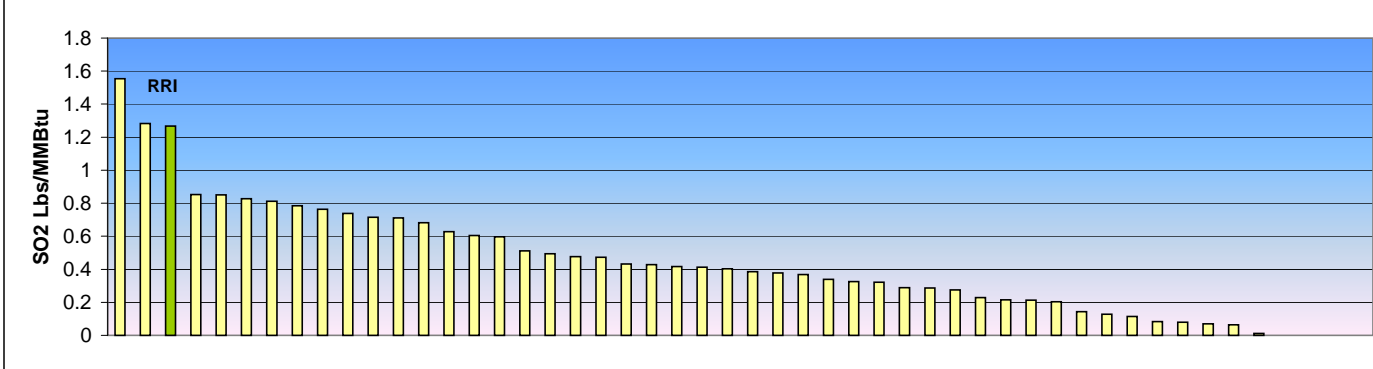
\* RRI Energy data reflects our respective 16.45% and 16.67% ownership interest in the Conemaugh and Keystone stations located in Pennsylvania.



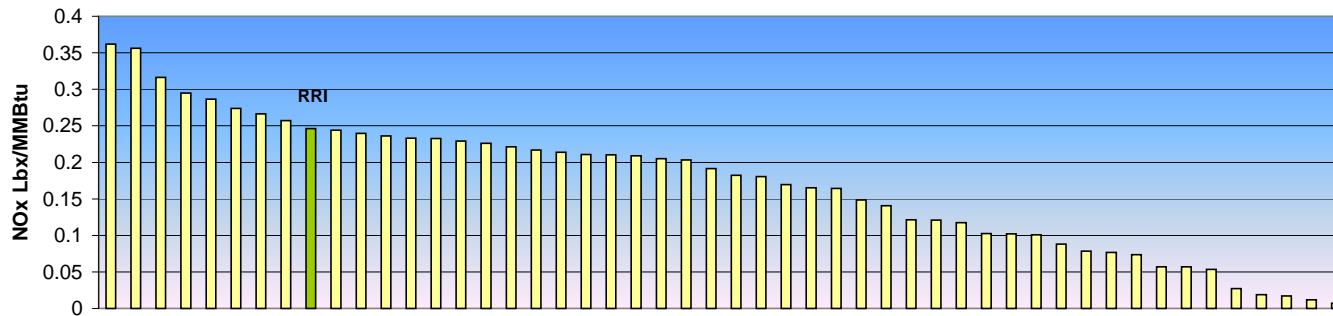
**Top 50 Generators Ranked by 2008 CO2 Emissions  
(Million Tons)**



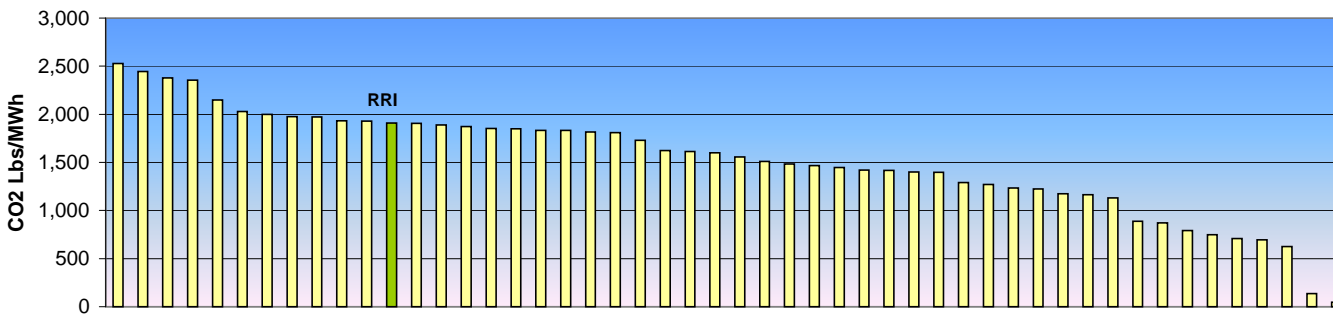
**Top 50 Generators Ranked by 2008 SO2 Emission Rate  
(Pounds of SO2 per Million Btu of Fuel Consumed)**



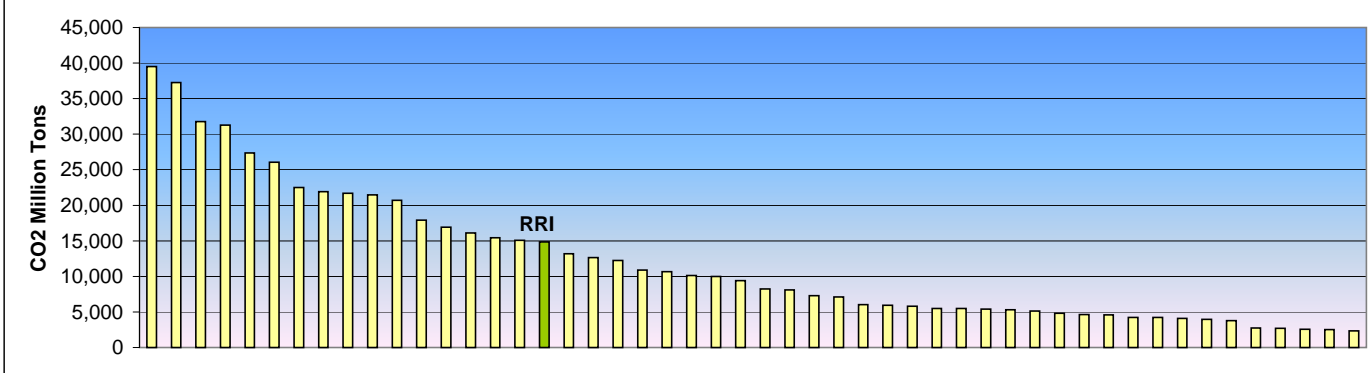
**Top 50 Generators Ranked by 2008 NOx Emission Rate  
(Pounds of NOx per Million Btu of Fuel Consumed)**



**Top 50 Generators Ranked by 2008 CO2 Intensity  
(Pounds of CO2 per Megawatt-Hour of Electricity Generated)**



**Top 50 Generators Ranked by 2008 Summer Generating Capacity  
(Megawatts)**



**Top 50 Generators Ranked by 2008 Electric Generation  
(Megawatt-Hours)**

